



Avocent Professional A/V Extension Solutions

Emerge™ ECMS2000U Digital Workstation Extender

FEATURES AND BENEFITS

- **Digital Desktop Over IP.** Provides quality high resolution video using cost-effective UTP cabling and networking devices.
- **Advanced Real-Time Compression.** Provides frame-by-frame compression resulting in near-zero latency. Eliminates OS specific software and drivers that consume precious server resources.
- **DVI-I Video.** Supports both digital and analog video computers and display devices for high resolution quality.
- **CD Quality Audio.** Provides CD quality audio performance for users with computer generated audio applications.
- **USB 2.0 Ports.** Includes four USB 2.0 ports for keyboard, mouse, and virtual media access.
- **Operates on Standard TCP/IP.** Allows the computer and user to be situated anywhere on the 10, 100 or 1000Mbps network with full routing of data across routers, switches and subnets.
- **Encryption of Network Data.** Ensures full security of user data using 128 bit AES encryption.
- **Single Wire Solution.** Provides ease of integration and installation to the desk or user station. Supports moves, additions, and reconfigurations.
- **Upgradeable.** Allows future features of the ECMS2000U digital workstation extender to be added to existing hardware.

Extend your digital workstation over IP

The Avocent EmERGE ECMS2000U digital workstation extender provides hardware-based digital desktop extension of video, keyboard, mouse, USB media, and audio signals. The EmERGE ECMS2000U solution allows users to back-rack broadcast quality servers without impact to post-production operations. The ECMS2000U consists of a computer node and user node interconnected in a point-to-point manner at Gigabit Ethernet rates using IP protocols over a single UTP cable.

The EmERGE ECMS2000U digital workstation extender meets the demanding needs of today's digital content creation professionals, including high resolution video, rich color depth, uncompromised responsiveness, CD quality audio, and compatibility with a wide range of user interface devices- while mission critical servers are securely maintained and managed.

The Avocent ECMS2000U extender removes the requirement for conditioned power in the edit suite and greatly reduces ambient noise in the creative space (edit suite or control room). Because the product offers hardware extension, it eliminates the burden that software products place on target servers. The virtual media functionality of the product provides a cost-effective alternative for expensive USB 2.0 extension products.



The EmERGE ECMS2000U digital workstation extender provides hardware-based extension for digital/analog video, USB keyboard and mouse, USB media, and audio signals.

EMERGE™ ECMS2000U DIGITAL WORKSTATION EXTENDER SPECIFICATIONS

TRANSMITTER MECHANICAL / POWER / ENVIRONMENTAL

Size: 6.02" (153 mm) D, 2.68" (68 mm) W, 0.83" (21 mm) H

Weight: .66 lbs (0.3 Kg) including cables

Power (AC input/frequency/current rating):

100 - 240 VAC / 50 - 60 Hz / 1A

Power (DC input/current rating): 5VDC / 1.1A

Power Consumption: 6W

Operating Temperature: 32°F (0°C) to 95°F (35°C)

Storage Temperature: -4°F (-20°C) to 140°F (60°C)

Humidity: 10% to 90% (Non-condensing)

TRANSMITTER FEATURES / PERFORMANCE

Connections: (2) USB, (1) DVI-I (supports digital and/or analog video), (1) stereo speaker jack, (1) mono microphone jack, (1) RJ-45 network

Network Speed: 100Mbps or 1Gbps

Encryption: SSL/AES 128 bit

Performance: USB keyboard, mouse, mass storage devices, stereo speakers 24 bit 44kHz, mono microphone, video up to 1280 x 1024 at 60 Hz

STANDARDS

Approvals: cUL, UL, CE, FCC15 Class A

RECEIVER MECHANICAL / POWER / ENVIRONMENTAL

Size: 5.12" (130 mm) D, 8.27" (210 mm) W, 1.04" (26.5 mm) H

Weight: 1.54 lbs (0.7 Kg)

Power (AC input/frequency/current rating):

100 - 240 VAC / 50 - 60 Hz / 1A

Power Consumption: 20W

Operating Temperature: 32°F (0°C) to 95°F (35°C)

Storage Temperature: -4°F (-20°C) to 140°F (60°C)

Humidity: 10% to 90% (Non-condensing)

RECEIVER FEATURES / PERFORMANCE

Connections: (2) PS/2, (4) USB, (1) DVI-I, (1) stereo speaker socket, (1) mono microphone socket, (1) RJ-45 network

Network Speed: 100Mbps or 1Gbps

Encryption: SSL/AES 128 bit

Performance: PS/2 / USB keyboard, mouse, mass storage devices, stereo speakers 24 bit 44kHz, mono microphone, video up to 1280 x 1024 at 60 Hz

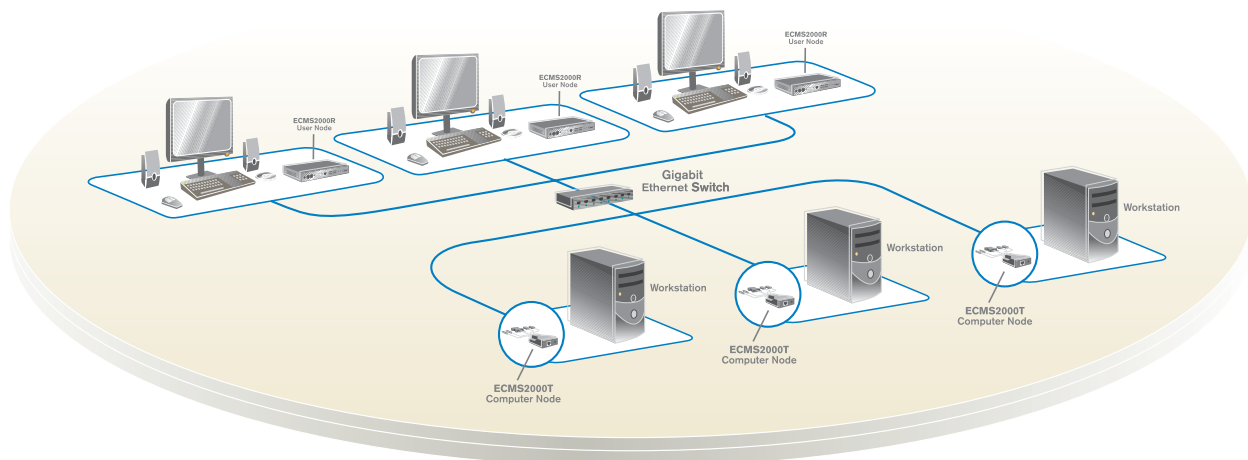
PART NUMBERS

ECMS2000U

WARRANTY

Two years

The Emerge ECMS2000U digital workstation extender includes computer nodes and user nodes that can be interconnected in a point-to-point configuration at Gigabit Ethernet rates using IP protocols over a single UTP cable. The ECMS2000U extender makes it possible to back-rack digital workstations without impact to post-production operations.



One Dambrackas Way, Sunrise, FL 33351
TEL 800.275.3500 - 954.746.9000, Ext. 7110
FAX 954.746.9101 - connectivity.sales@avocent.com
www.avocent.com

Avocent, the Avocent logo and Emerge are trademarks or registered trademarks of Avocent Corporation. All other marks are the property of their respective owners. © 2006 Avocent Corporation.

0906-ECMS2000U-TP